



ALS Canada Ltd.  
2103 Dollarton Hwy  
North Vancouver BC V7H 0A7  
Phone: 604 984 0221 Fax: 604 984 0218 www.alsglobal.com

To: GOLDEN PREDATOR CANADA CORP.  
C/O PREDATOR MINING GROUP  
888 DUNSMUIR STREET, 11TH FLOOR  
VANCOUVER BC V6C 3K4

Page: 1  
Finalized Date: 29-NOV-2012  
Account: GOPRED

**CERTIFICATE WH12264109**

Project: Brewery Creek

P.O. No.: BRC-2012-JC-2414

This report is for 140 Drill Core samples submitted to our lab in Whitehorse, YT, Canada on 15-NOV-2012.

The following have access to data associated with this certificate:

TYLER BOURNE  
JACK COTE  
BRUCE OTTO  
BILL SHERIFF

MIKE BURKE  
GILLES DESSUREAU  
DON PENNER  
NEIL SWIFT

ANDREW CALDWELL  
MIKE MASLOWSKI  
GOLDEN PREDATOR

**SAMPLE PREPARATION**

ALS CODE	DESCRIPTION
WEI-21	Received Sample Weight
PUL-31	Pulverize split to 85% <75 um
SPL-21d	Split sample - duplicate
PUL-31d	Pulverize Split - duplicate
LOG-21d	Sample logging - ClientBarCode Dup
SPL-34	Pulp Splitting Charge
CRU-QC	Crushing QC Test
PUL-QC	Pulverizing QC Test
LOG-23	Pulp Login - Rcvd with Barcode
LOG-21	Sample logging - ClientBarCode
CRU-31	Fine crushing - 70% <2mm
SPL-21	Split sample - riffle splitter

**ANALYTICAL PROCEDURES**

ALS CODE	DESCRIPTION	INSTRUMENT
Au-AA23	Au 30g FA-AA finish	AAS
ME-ICP41	35 Element Aqua Regia ICP-AES	ICP-AES

To: GOLDEN PREDATOR CANADA CORP.  
ATTN: GOLDEN PREDATOR  
C/O PREDATOR MINING GROUP  
888 DUNSMUIR STREET, 11TH FLOOR  
VANCOUVER BC V6C 3K4

This is the Final Report and supersedes any preliminary report with this certificate number. Results apply to samples as submitted. All pages of this report have been checked and approved for release.

Signature:

Colin Ramshaw, Vancouver Laboratory Manager



ALS Canada Ltd.  
2103 Dollarton Hwy  
North Vancouver BC V7H 0A7  
Phone: 604 984 0221 Fax: 604 984 0218 www.alsglobal.com

To: GOLDEN PREDATOR CANADA CORP.  
C/O PREDATOR MINING GROUP  
888 DUNSMUIR STREET, 11TH FLOOR  
VANCOUVER BC V6C 3K4

Page: 2 - A  
Total # Pages: 5 (A - C)  
Finalized Date: 29-NOV-2012  
Account: GOPRED

Project: Brewery Creek

**CERTIFICATE OF ANALYSIS WH12264109**

Sample Description	Method Analyte Units LOR	WEI-21 Recvd Wt. kg	Au-AA23 Au ppm	ME-ICP41 Ag ppm	ME-ICP41 Al %	ME-ICP41 As ppm	ME-ICP41 B ppm	ME-ICP41 Ba ppm	ME-ICP41 Be ppm	ME-ICP41 Bi ppm	ME-ICP41 Ca %	ME-ICP41 Cd ppm	ME-ICP41 Co ppm	ME-ICP41 Cr ppm	ME-ICP41 Cu ppm	ME-ICP41 Fe %
		0.02	0.005	0.2	0.01	2	10	10	0.5	2	0.01	0.5	1	1	1	0.01
L856616		0.23	0.005	<0.2	1.58	18	<10	290	0.5	<2	0.74	<0.5	11	63	31	2.19
L856617		6.12	0.010	0.5	1.81	12	<10	480	1.9	<2	1.08	<0.5	15	92	51	2.91
L856618		7.02	0.058	1.1	1.94	73	<10	390	3.0	2	1.48	1.2	16	99	56	3.26
L856619		8.16	0.025	1.0	1.98	43	<10	440	3.4	<2	1.65	1.3	18	107	105	3.66
L856620		5.65	0.056	1.0	1.72	63	<10	370	3.3	2	1.38	1.0	19	105	105	3.65
L856621		7.25	0.242	2.4	1.80	1655	<10	420	2.8	6	1.24	1.1	17	99	88	3.36
L856622		6.56	0.065	1.9	1.93	100	10	430	3.3	2	1.35	0.8	17	101	86	3.17
L856623		6.87	0.070	1.8	1.92	128	10	420	3.2	4	1.27	0.9	16	97	116	3.06
L856624		3.97	0.027	0.5	1.61	25	<10	390	5.2	<2	1.26	0.8	20	149	40	4.42
L856625		2.44	0.028	0.3	1.06	17	<10	320	3.4	<2	1.21	<0.5	14	89	44	2.91
L856626		2.97	0.033	0.2	1.02	13	<10	290	3.1	<2	1.14	<0.5	13	84	36	2.77
L856627		8.35	0.025	0.6	1.35	43	<10	430	3.0	<2	1.61	<0.5	16	93	68	3.32
L856628		5.74	0.070	0.3	1.52	104	<10	270	3.1	2	2.04	<0.5	17	104	59	3.39
L856629		5.90	0.076	0.8	1.45	24	<10	260	3.0	<2	1.97	<0.5	15	97	100	3.28
L856630		7.15	0.066	0.5	1.43	37	<10	290	2.5	2	1.64	<0.5	15	90	57	3.21
L856631		6.34	0.054	0.7	1.41	16	<10	300	2.6	<2	1.47	<0.5	15	91	97	3.18
L856632		7.51	0.032	0.3	1.33	22	<10	330	2.9	<2	1.59	<0.5	15	93	79	3.20
L856633		5.69	0.045	<0.2	1.43	29	<10	280	3.4	<2	1.56	<0.5	15	93	79	3.36
L856634		7.75	0.227	0.9	1.51	462	<10	270	4.0	6	1.58	<0.5	17	95	79	3.64
L856635		7.76	0.101	0.4	1.41	76	<10	280	3.0	3	1.36	<0.5	16	88	103	3.23
L856636		0.07	0.434	0.6	0.62	591	<10	1340	<0.5	<2	0.64	<0.5	2	99	12	6.03
L856637		5.96	0.236	0.4	1.61	64	<10	290	3.2	6	1.50	<0.5	18	106	103	3.48
L856638		8.03	0.030	0.4	1.53	29	<10	260	3.2	3	1.78	<0.5	17	106	64	3.57
L856639		6.57	0.030	0.5	0.98	64	<10	280	1.9	<2	1.25	<0.5	10	59	79	2.14
L856640		8.68	0.028	0.3	1.33	98	<10	320	1.9	<2	1.46	<0.5	14	87	55	3.05
L856641		7.26	0.032	0.3	1.46	32	<10	320	2.0	<2	1.31	<0.5	15	99	55	3.25
L856642		7.70	0.063	0.5	1.50	64	<10	330	2.1	<2	1.52	<0.5	15	100	69	3.36
L856643		8.13	0.026	0.3	1.44	43	<10	320	2.1	<2	1.67	<0.5	15	94	51	3.32
L856644		6.33	0.096	0.5	1.27	76	<10	270	2.2	<2	1.50	<0.5	13	80	55	2.77
L856645		7.77	0.023	0.4	1.59	18	<10	300	3.6	<2	2.97	0.6	17	123	77	3.70
L856646		<0.02	0.026	0.5	1.57	21	<10	300	3.4	<2	2.84	0.6	17	119	76	3.65
L856647		7.59	0.014	0.4	1.52	17	<10	310	3.4	<2	1.92	<0.5	16	106	77	3.53
L856648		5.81	0.097	0.4	0.71	44	<10	200	2.1	<2	1.29	<0.5	5	32	84	1.59
L856649		8.09	0.041	<0.2	1.47	38	<10	540	2.5	<2	1.67	<0.5	15	97	45	3.22
L856650		5.36	0.065	0.2	1.33	62	<10	600	1.7	<2	1.55	<0.5	14	100	44	2.76
L856151		4.99	0.153	<0.2	1.53	77	<10	610	2.1	<2	1.74	<0.5	17	107	30	3.22
L856152		2.18	0.304	0.3	1.67	93	<10	630	3.4	<2	1.70	<0.5	19	127	69	3.97
L856153		2.38	0.226	0.3	1.66	93	<10	630	3.2	4	1.92	<0.5	17	119	47	3.92
L856154		5.14	0.098	0.5	0.48	105	<10	170	2.9	2	0.57	<0.5	4	9	73	1.36
L856155		3.95	0.067	0.4	0.61	85	<10	180	3.4	<2	0.67	<0.5	5	19	86	1.74



ALS Canada Ltd.  
 2103 Dollarton Hwy  
 North Vancouver BC V7H 0A7  
 Phone: 604 984 0221 Fax: 604 984 0218 www.alsglobal.com

To: GOLDEN PREDATOR CANADA CORP.  
 C/O PREDATOR MINING GROUP  
 888 DUNSMUIR STREET, 11TH FLOOR  
 VANCOUVER BC V6C 3K4

Page: 2 - B  
 Total # Pages: 5 (A - C)  
 Finalized Date: 29-NOV-2012  
 Account: GOPRED

Project: Brewery Creek

**CERTIFICATE OF ANALYSIS WH12264109**

Sample Description	Method Analyte Units LOR	ME-ICP41 Ga ppm 10	ME-ICP41 Hg ppm 1	ME-ICP41 K % 0.01	ME-ICP41 La ppm 10	ME-ICP41 Mg % 0.01	ME-ICP41 Mn ppm 5	ME-ICP41 Mo ppm 1	ME-ICP41 Na % 0.01	ME-ICP41 Ni ppm 1	ME-ICP41 P ppm 10	ME-ICP41 Pb ppm 2	ME-ICP41 S % 0.01	ME-ICP41 Sb ppm 2	ME-ICP41 Sc ppm 1	ME-ICP41 Sr ppm 1
L856616		<10	<1	0.18	10	0.71	305	<1	0.05	28	500	6	<0.01	<2	5	35
L856617		10	<1	1.06	60	1.69	455	<1	0.04	12	2710	89	<0.01	<2	3	282
L856618		10	<1	0.98	70	1.83	556	<1	0.04	11	2900	103	<0.01	<2	6	268
L856619		10	<1	1.03	70	1.82	612	<1	0.04	13	2910	133	<0.01	<2	8	336
L856620		10	1	1.14	70	1.69	649	<1	0.06	12	2930	136	<0.01	2	7	245
L856621		10	<1	1.15	70	1.64	501	<1	0.08	11	2880	147	<0.01	3	5	257
L856622		10	<1	1.18	70	1.78	501	<1	0.11	12	3080	115	<0.01	<2	4	274
L856623		10	<1	1.13	70	1.75	505	<1	0.13	11	2990	164	<0.01	<2	4	270
L856624		10	1	1.07	80	1.70	665	<1	0.08	13	3160	56	<0.01	<2	17	259
L856625		10	1	0.82	80	1.21	523	<1	0.06	11	2990	36	<0.01	<2	8	219
L856626		10	<1	0.76	70	1.16	482	<1	0.06	10	2800	27	<0.01	<2	7	206
L856627		10	<1	1.01	70	1.41	797	<1	0.06	12	2780	70	<0.01	<2	6	241
L856628		10	1	1.15	70	1.54	546	<1	0.06	12	2850	23	<0.01	<2	6	253
L856629		10	1	1.06	70	1.57	575	<1	0.05	11	2660	95	<0.01	<2	6	199
L856630		10	1	1.09	60	1.49	491	<1	0.06	11	2600	69	<0.01	<2	5	192
L856631		10	1	1.11	70	1.44	525	<1	0.06	12	2800	68	<0.01	<2	5	184
L856632		10	1	1.08	70	1.40	508	<1	0.07	11	2720	33	<0.01	<2	6	191
L856633		10	<1	1.06	70	1.43	482	<1	0.06	11	2550	22	<0.01	<2	7	169
L856634		10	1	1.07	70	1.53	563	<1	0.06	11	2570	40	<0.01	<2	6	159
L856635		10	1	1.03	70	1.48	482	<1	0.05	11	2750	64	<0.01	<2	5	170
L856636		<10	12	0.10	20	0.03	14	4	0.04	9	390	4	0.25	38	2	195
L856637		10	1	1.26	80	1.71	516	<1	0.06	13	3040	35	<0.01	<2	5	193
L856638		10	<1	1.05	80	1.75	559	<1	0.06	12	2990	83	<0.01	<2	6	214
L856639		<10	<1	0.89	60	0.96	321	3	0.06	12	1760	30	<0.01	<2	3	153
L856640		10	<1	1.11	60	1.43	434	2	0.05	11	2450	37	<0.01	<2	4	153
L856641		10	<1	1.22	60	1.63	478	2	0.06	11	2610	42	<0.01	<2	4	163
L856642		10	<1	1.24	70	1.73	475	1	0.06	10	2690	63	<0.01	<2	4	178
L856643		10	<1	1.17	60	1.65	524	1	0.05	10	2620	63	<0.01	<2	5	169
L856644		10	<1	0.93	60	1.41	449	2	0.05	8	2220	68	<0.01	<2	5	170
L856645		10	<1	0.98	70	1.89	702	2	0.04	11	2560	88	<0.01	<2	9	220
L856646		10	<1	0.95	70	1.87	682	1	0.04	11	2540	89	<0.01	<2	8	215
L856647		10	<1	1.05	70	1.64	595	1	0.05	12	2490	68	<0.01	<2	8	158
L856648		<10	<1	0.50	50	0.68	269	2	0.05	5	1250	14	<0.01	<2	4	134
L856649		10	<1	1.25	70	1.65	467	2	0.06	13	2770	11	<0.01	<2	5	126
L856650		10	<1	1.23	60	1.46	405	2	0.05	15	2610	13	<0.01	<2	4	107
L856151		10	<1	1.33	70	1.68	470	1	0.05	16	2660	13	<0.01	<2	5	109
L856152		10	<1	1.25	90	2.05	671	1	0.05	18	2830	14	<0.01	5	10	110
L856153		10	<1	1.21	80	2.04	623	1	0.05	18	2840	14	<0.01	5	9	109
L856154		<10	<1	0.34	70	0.31	225	2	0.09	2	1170	13	<0.01	4	4	102
L856155		<10	<1	0.43	60	0.45	250	2	0.08	4	1240	12	<0.01	5	5	92



ALS Canada Ltd.  
 2103 Dollarton Hwy  
 North Vancouver BC V7H 0A7  
 Phone: 604 984 0221 Fax: 604 984 0218 www.alsglobal.com

To: GOLDEN PREDATOR CANADA CORP.  
 C/O PREDATOR MINING GROUP  
 888 DUNSMUIR STREET, 11TH FLOOR  
 VANCOUVER BC V6C 3K4

Page: 2 - C  
 Total # Pages: 5 (A - C)  
 Finalized Date: 29-NOV-2012  
 Account: GOPRED

Project: Brewery Creek

**CERTIFICATE OF ANALYSIS WH12264109**

Sample Description	Method Analyte Units LOR	ME-ICP41	ME-ICP41	ME-ICP41	ME-ICP41	ME-ICP41	ME-ICP41	ME-ICP41
		Th	Ti	Ti	U	V	W	Zn
		ppm	%	ppm	ppm	ppm	ppm	ppm
		20	0.01	10	10	1	10	2
L856616		<20	0.17	<10	<10	64	<10	47
L856617		20	0.24	<10	<10	79	<10	119
L856618		20	0.27	<10	<10	86	<10	139
L856619		30	0.27	<10	<10	102	<10	187
L856620		30	0.29	<10	<10	107	<10	243
L856621		20	0.25	<10	<10	109	<10	163
L856622		20	0.30	<10	10	99	<10	137
L856623		20	0.29	<10	<10	98	<10	141
L856624		20	0.32	<10	10	164	<10	164
L856625		20	0.25	<10	<10	88	<10	98
L856626		20	0.24	<10	<10	82	<10	92
L856627		30	0.33	<10	10	99	<10	123
L856628		40	0.31	<10	10	101	<10	148
L856629		40	0.30	<10	10	89	<10	164
L856630		30	0.31	<10	<10	91	<10	151
L856631		30	0.33	<10	<10	92	<10	149
L856632		20	0.34	<10	<10	88	<10	122
L856633		40	0.30	<10	10	94	<10	168
L856634		50	0.31	<10	10	102	<10	165
L856635		30	0.31	<10	<10	92	<10	150
L856636		<20	0.01	<10	<10	96	10	16
L856637		50	0.33	<10	10	100	<10	159
L856638		50	0.34	<10	10	107	<10	151
L856639		30	0.24	<10	<10	65	<10	91
L856640		30	0.31	<10	<10	84	<10	117
L856641		30	0.32	<10	<10	90	<10	137
L856642		40	0.32	<10	<10	93	<10	160
L856643		30	0.31	<10	<10	96	<10	166
L856644		50	0.23	<10	<10	91	<10	115
L856645		40	0.29	<10	<10	128	<10	172
L856646		40	0.28	<10	<10	125	<10	168
L856647		40	0.28	<10	<10	105	<10	189
L856648		30	0.12	<10	<10	50	<10	61
L856649		40	0.32	<10	<10	95	<10	168
L856650		30	0.31	<10	<10	95	<10	136
L856151		40	0.34	<10	<10	106	<10	136
L856152		50	0.39	<10	10	123	<10	143
L856153		40	0.36	<10	<10	115	<10	131
L856154		80	0.11	<10	10	39	<10	33
L856155		50	0.14	<10	10	44	<10	36



ALS Canada Ltd.  
2103 Dollarton Hwy  
North Vancouver BC V7H 0A7  
Phone: 604 984 0221 Fax: 604 984 0218 www.alsglobal.com

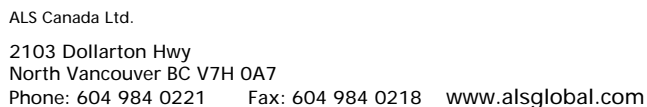
To: GOLDEN PREDATOR CANADA CORP.  
C/O PREDATOR MINING GROUP  
888 DUNSMUIR STREET, 11TH FLOOR  
VANCOUVER BC V6C 3K4

Page: 3 - A  
Total # Pages: 5 (A - C)  
Finalized Date: 29-NOV-2012  
Account: GOPRED

Project: Brewery Creek

**CERTIFICATE OF ANALYSIS WH12264109**

Sample Description	Method Analyte Units LOR	WEI-21 Recvd Wt. kg	Au-AA23 Au ppm	ME-ICP41 Ag ppm	ME-ICP41 Al %	ME-ICP41 As ppm	ME-ICP41 B ppm	ME-ICP41 Ba ppm	ME-ICP41 Be ppm	ME-ICP41 Bi ppm	ME-ICP41 Ca %	ME-ICP41 Cd ppm	ME-ICP41 Co ppm	ME-ICP41 Cr ppm	ME-ICP41 Cu ppm	ME-ICP41 Fe %
		0.02	0.005	0.2	0.01	2	10	10	0.5	2	0.01	0.5	1	1	1	0.01
L856156		4.26	0.090	0.4	0.52	43	<10	150	3.0	<2	0.55	<0.5	3	8	48	1.36
L856157		6.79	0.047	0.3	0.48	53	<10	160	3.0	<2	0.55	<0.5	3	7	33	1.19
L856158		4.66	0.066	0.2	0.51	40	<10	180	2.9	<2	0.54	<0.5	3	6	40	1.17
L856159		5.37	0.069	<0.2	0.54	89	<10	140	3.1	<2	0.60	<0.5	3	9	43	1.40
L856160		4.81	0.053	0.3	0.49	50	<10	170	2.8	<2	0.60	<0.5	3	7	55	1.20
L856161		5.58	0.110	0.2	0.56	38	<10	190	2.9	<2	0.76	<0.5	5	13	68	1.44
L856162		4.53	0.065	0.2	1.10	131	<10	250	2.9	<2	1.96	<0.5	10	67	38	2.53
L856163		4.48	0.047	<0.2	0.99	55	<10	240	2.3	<2	1.16	<0.5	10	23	34	2.34
L856164		0.97	<0.005	<0.2	0.02	2	<10	10	<0.5	<2	21.1	<0.5	<1	<1	1	0.51
L856165		2.73	0.133	0.2	0.85	77	<10	180	2.9	2	1.14	<0.5	8	20	84	2.15
L856166		3.13	0.100	<0.2	0.91	79	<10	240	2.6	<2	1.25	<0.5	10	28	43	2.24
L856167		2.88	0.274	<0.2	1.69	177	10	560	2.6	2	1.41	<0.5	16	132	98	3.59
L856168		2.06	0.037	0.2	0.79	169	<10	200	2.5	<2	0.92	<0.5	8	19	77	1.93
L856169		4.25	0.129	0.2	0.77	411	<10	200	3.6	2	0.87	<0.5	7	39	68	1.92
L856170		2.10	0.022	<0.2	0.91	73	<10	270	2.9	<2	1.04	<0.5	9	27	55	2.19
L856171		4.98	0.075	<0.2	1.01	115	<10	280	2.6	2	1.17	<0.5	10	30	41	2.48
L856172		3.62	0.081	<0.2	1.03	233	<10	310	1.6	<2	1.18	<0.5	11	27	45	2.57
L856173		2.43	0.037	0.2	1.44	165	<10	260	4.4	<2	1.38	<0.5	18	50	58	4.57
L856174		<0.02	0.008	<0.2	0.89	14	<10	180	2.1	<2	2.74	<0.5	10	23	65	2.35
L856175		7.31	0.007	<0.2	0.85	12	<10	180	2.0	<2	2.62	<0.5	10	22	65	2.25
L856176		Not Recvd														
L856177		3.77	0.050	0.2	1.05	24	<10	200	3.2	<2	3.29	<0.5	12	35	48	2.92
L856178		2.04	0.019	0.3	1.19	90	<10	370	1.7	<2	1.41	<0.5	14	49	36	3.10
L856179		3.54	0.039	<0.2	1.08	482	<10	240	3.2	<2	2.51	<0.5	15	61	14	3.00
L856180		4.20	0.005	<0.2	0.93	58	<10	250	1.1	<2	1.16	<0.5	11	49	11	2.12
L856181		4.49	0.131	2.8	0.92	269	<10	280	1.7	<2	1.43	<0.5	10	53	19	2.16
L856182		3.39	0.009	<0.2	0.92	83	<10	250	1.1	<2	1.05	<0.5	10	44	7	1.97
L856183		1.94	0.030	<0.2	0.89	331	<10	210	1.4	<2	1.30	<0.5	11	45	28	2.02
L856184		2.24	0.040	<0.2	0.87	231	<10	210	1.4	<2	1.35	<0.5	10	43	30	1.95
L856185		4.51	0.074	<0.2	1.06	211	<10	260	1.7	<2	1.68	<0.5	13	71	36	2.46
L856186		4.34	0.398	0.4	0.94	2580	<10	160	2.3	3	3.02	<0.5	11	41	48	2.43
L856187		3.67	0.026	<0.2	0.78	206	<10	180	3.2	<2	1.22	<0.5	9	38	49	2.03
L856188		4.12	0.010	<0.2	0.85	119	<10	270	1.2	<2	1.35	<0.5	10	40	22	1.88
L856189		3.92	0.101	0.3	0.86	926	<10	230	1.5	3	1.60	<0.5	11	45	22	2.09
L856190		4.08	0.071	0.2	0.78	584	<10	210	1.4	2	1.41	<0.5	9	40	26	1.88
L856191		4.20	0.011	0.2	0.74	155	<10	200	1.3	<2	1.24	<0.5	9	35	43	1.77
L856192		4.10	0.043	0.4	0.87	694	<10	210	1.6	<2	1.64	<0.5	10	40	48	2.11
L856193		3.92	0.086	1.9	0.89	881	<10	180	2.3	<2	2.41	<0.5	10	40	65	2.25
L856194		0.07	0.449	0.2	0.56	552	<10	1040	<0.5	<2	0.63	<0.5	2	93	9	5.92
L856195		4.24	0.013	0.2	0.80	300	<10	180	2.3	<2	1.32	<0.5	10	41	50	2.10



Page: 3 - B  
Total # Pages: 5 (A - C)  
Finalized Date: 29-NOV-2012  
Account: GOPRED

**CERTIFICATE OF ANALYSIS    WH12264109**

Sample Description	Method Analyte Units LOR	ME-ICP41	ME-ICP41	ME-ICP41	ME-ICP41	ME-ICP41	ME-ICP41	ME-ICP41	ME-ICP41	ME-ICP41	ME-ICP41	ME-ICP41	ME-ICP41	ME-ICP41	ME-ICP41	
		Ga	Hg	K	La	Mg	Mn	Mo	Na	Ni	P	Pb	S	Sb	Sc	Sr
		ppm 10	ppm 1	% 0.01	ppm 10	% 0.01	ppm 5	ppm 1	% 0.01	ppm 1	ppm 10	ppm 2	% 0.01	ppm 2	ppm 1	ppm 1
L856156		<10	<1	0.31	60	0.33	266	2	0.08	2	1100	11	<0.01	4	4	86
L856157		<10	<1	0.30	70	0.33	243	2	0.09	2	1150	12	<0.01	3	3	94
L856158		<10	<1	0.30	70	0.31	255	2	0.08	2	1150	14	<0.01	3	3	119
L856159		<10	<1	0.27	70	0.41	266	2	0.07	1	1190	12	<0.01	3	5	88
L856160		<10	<1	0.31	70	0.33	242	2	0.09	2	1330	13	<0.01	2	4	105
L856161		<10	<1	0.34	70	0.47	294	2	0.07	3	1820	12	<0.01	2	5	145
L856162		10	<1	0.79	60	0.99	413	2	0.06	12	1730	16	<0.01	3	6	196
L856163		10	<1	0.94	70	0.86	285	2	0.08	10	2260	18	<0.01	<2	3	96
L856164		<10	<1	0.01	<10	12.25	219	1	<0.01	<1	180	<2	0.01	<2	<1	50
L856165		10	<1	0.75	70	0.82	267	2	0.06	7	1900	15	<0.01	<2	3	87
L856166		10	<1	0.84	70	0.90	285	2	0.06	11	2120	14	<0.01	<2	3	111
L856167		10	<1	1.16	60	1.39	394	5	0.08	52	2760	13	0.15	12	10	134
L856168		<10	<1	0.75	70	0.65	210	4	0.07	8	1600	16	0.16	4	2	105
L856169		<10	<1	0.67	70	0.72	215	2	0.09	8	1300	22	0.05	5	3	88
L856170		<10	<1	0.87	80	0.88	268	3	0.08	10	2020	14	0.08	<2	3	129
L856171		10	<1	0.95	80	1.03	302	2	0.07	11	2290	13	<0.01	<2	4	134
L856172		10	<1	1.11	70	0.99	307	2	0.08	12	2430	10	<0.01	<2	3	131
L856173		10	<1	1.05	80	1.26	393	2	0.05	18	2830	14	<0.01	4	16	125
L856174		<10	<1	0.73	70	0.83	308	2	0.05	9	2160	12	<0.01	<2	4	105
L856175		<10	<1	0.72	60	0.81	302	<1	0.05	10	2060	13	<0.01	2	3	103
L856176																
L856177		10	<1	0.61	60	1.14	527	<1	0.04	12	2140	11	<0.01	3	8	126
L856178		10	<1	1.20	60	1.19	390	<1	0.06	16	2390	11	0.01	<2	5	141
L856179		10	<1	1.03	60	1.23	417	1	0.05	19	2070	9	0.05	2	8	133
L856180		10	<1	1.05	60	0.95	258	1	0.07	15	1890	9	0.02	<2	3	105
L856181		10	<1	1.02	60	1.05	301	1	0.07	16	1920	21	0.03	5	3	128
L856182		<10	<1	1.00	60	1.06	225	1	0.08	16	1860	8	0.02	2	2	115
L856183		<10	<1	0.96	60	1.00	255	1	0.07	16	1830	7	0.04	4	3	123
L856184		<10	<1	0.92	60	0.97	251	1	0.07	14	1810	8	0.04	3	3	128
L856185		10	<1	1.04	70	1.40	330	1	0.07	18	2090	7	0.04	3	5	127
L856186		10	<1	0.75	60	1.02	492	1	0.06	15	1690	8	0.19	7	4	200
L856187		<10	<1	0.68	70	0.78	293	1	0.09	11	1470	14	0.10	2	5	107
L856188		<10	<1	0.94	60	0.84	271	<1	0.08	14	1840	6	0.03	<2	3	119
L856189		<10	<1	0.94	60	0.99	286	1	0.07	15	1970	11	0.07	2	4	126
L856190		<10	<1	0.91	60	0.87	265	1	0.07	13	1820	8	0.05	2	3	133
L856191		<10	<1	0.84	60	0.77	252	1	0.08	13	1660	11	0.07	<2	2	139
L856192		<10	<1	0.91	60	0.91	322	<1	0.09	15	1780	18	0.11	2	3	215
L856193		<10	<1	0.78	60	0.92	428	<1	0.07	14	1690	80	0.12	11	5	282
L856194		<10	11	0.09	20	0.03	11	3	0.03	6	360	6	0.23	38	2	182
L856195		<10	<1	0.84	60	0.88	324	<1	0.08	14	1750	9	0.10	2	4	130



ALS Canada Ltd.  
 2103 Dollarton Hwy  
 North Vancouver BC V7H 0A7  
 Phone: 604 984 0221 Fax: 604 984 0218 www.alsglobal.com

To: GOLDEN PREDATOR CANADA CORP.  
 C/O PREDATOR MINING GROUP  
 888 DUNSMUIR STREET, 11TH FLOOR  
 VANCOUVER BC V6C 3K4

Page: 3 - C  
 Total # Pages: 5 (A - C)  
 Finalized Date: 29-NOV-2012  
 Account: GOPRED

Project: Brewery Creek

**CERTIFICATE OF ANALYSIS WH12264109**

Sample Description	Method Analyte Units LOR	ME-ICP41	ME-ICP41	ME-ICP41	ME-ICP41	ME-ICP41	ME-ICP41	ME-ICP41
		Th	Ti	Ti	U	V	W	Zn
		ppm	%	ppm	ppm	ppm	ppm	ppm
		20	0.01	10	10	1	10	2
L856156		50	0.10	<10	10	32	<10	29
L856157		60	0.10	<10	10	31	<10	27
L856158		60	0.09	<10	10	27	<10	26
L856159		60	0.09	<10	10	46	<10	31
L856160		60	0.09	<10	10	31	<10	28
L856161		50	0.12	<10	10	31	<10	37
L856162		40	0.24	<10	<10	76	<10	66
L856163		50	0.27	<10	10	71	<10	64
L856164		<20	<0.01	<10	<10	1	<10	16
L856165		70	0.22	<10	10	63	<10	52
L856166		40	0.25	<10	10	75	<10	57
L856167		40	0.30	<10	10	161	<10	67
L856168		70	0.21	<10	20	63	<10	46
L856169		90	0.20	<10	20	67	<10	47
L856170		50	0.26	<10	20	67	<10	59
L856171		40	0.28	<10	10	76	<10	65
L856172		20	0.32	<10	<10	84	<10	71
L856173		20	0.32	<10	<10	156	<10	114
L856174		30	0.26	<10	<10	73	<10	60
L856175		30	0.24	<10	10	69	<10	59
L856176								
L856177		30	0.24	<10	<10	77	<10	74
L856178		20	0.31	<10	<10	90	<10	81
L856179		30	0.26	<10	<10	92	<10	89
L856180		20	0.26	<10	<10	66	<10	60
L856181		30	0.26	<10	10	65	<10	69
L856182		20	0.25	<10	<10	57	<10	52
L856183		20	0.24	<10	<10	57	<10	55
L856184		20	0.23	<10	<10	55	<10	53
L856185		20	0.29	<10	<10	71	<10	73
L856186		20	0.20	<10	<10	65	<10	58
L856187		60	0.19	<10	20	59	<10	54
L856188		20	0.23	<10	<10	54	<10	48
L856189		30	0.23	<10	10	61	<10	50
L856190		20	0.22	<10	<10	51	<10	45
L856191		30	0.21	<10	10	45	<10	55
L856192		20	0.22	<10	<10	53	<10	63
L856193		30	0.19	<10	10	61	<10	73
L856194		<20	0.01	<10	<10	89	10	13
L856195		30	0.21	<10	10	57	<10	62



ALS Canada Ltd.  
2103 Dollarton Hwy  
North Vancouver BC V7H 0A7  
Phone: 604 984 0221 Fax: 604 984 0218 www.alsglobal.com

To: GOLDEN PREDATOR CANADA CORP.  
C/O PREDATOR MINING GROUP  
888 DUNSMUIR STREET, 11TH FLOOR  
VANCOUVER BC V6C 3K4

Page: 4 - A  
Total # Pages: 5 (A - C)  
Finalized Date: 29-NOV-2012  
Account: GOPRED

Project: Brewery Creek

**CERTIFICATE OF ANALYSIS WH12264109**

Sample Description	Method Analyte Units LOR	WEI-21 Recvd Wt. kg	Au-AA23 Au ppm	ME-ICP41 Ag ppm	ME-ICP41 Al %	ME-ICP41 As ppm	ME-ICP41 B ppm	ME-ICP41 Ba ppm	ME-ICP41 Be ppm	ME-ICP41 Bi ppm	ME-ICP41 Ca %	ME-ICP41 Cd ppm	ME-ICP41 Co ppm	ME-ICP41 Cr ppm	ME-ICP41 Cu ppm	ME-ICP41 Fe %
		0.02	0.005	0.2	0.01	2	10	10	0.5	2	0.01	0.5	1	1	1	0.01
L856196		4.88	0.010	<0.2	0.77	215	<10	180	1.3	<2	0.97	<0.5	9	36	41	1.86
L856197		3.85	0.056	0.2	0.82	2410	<10	180	1.8	<2	1.55	<0.5	10	40	46	2.25
L856198		5.66	0.021	0.2	0.84	294	<10	200	1.5	2	1.40	<0.5	10	40	49	2.11
L856199		3.24	0.063	<0.2	0.90	1005	<10	300	1.2	3	0.85	<0.5	7	82	17	1.98
L856200		5.76	0.070	<0.2	0.91	284	<10	290	1.2	<2	0.95	<0.5	7	101	18	2.08
L856201		2.61	0.043	0.3	0.65	541	<10	210	1.8	<2	0.90	<0.5	5	13	64	2.05
L856202		2.90	0.047	0.2	0.53	566	<10	130	2.0	<2	0.88	<0.5	5	16	33	2.07
L856203		4.57	0.177	0.6	0.57	1875	<10	130	1.5	<2	1.30	<0.5	6	17	63	2.57
L856204		1.01	<0.005	<0.2	0.02	3	<10	20	<0.5	<2	19.9	<0.5	<1	<1	1	0.44
L856205		4.19	0.071	0.3	0.57	1065	<10	160	1.1	<2	0.90	<0.5	5	14	35	2.39
L856206		3.24	0.022	0.8	0.61	987	<10	160	1.2	3	1.04	<0.5	5	18	44	2.70
L856207		4.44	0.047	0.6	0.81	2120	<10	260	1.8	4	1.18	<0.5	8	20	67	3.75
L856208		4.71	0.014	0.2	1.02	109	<10	380	1.7	<2	1.13	<0.5	8	32	40	2.48
L856209		3.76	0.019	0.6	1.04	51	<10	260	2.4	3	1.27	<0.5	7	23	35	2.54
L856210		4.30	0.008	1.1	0.93	35	<10	240	2.0	<2	0.79	<0.5	6	21	32	2.23
L856211		4.06	0.029	2.0	0.95	87	<10	240	2.5	<2	0.80	<0.5	7	18	50	2.46
L856212		3.49	0.022	0.4	0.97	24	<10	230	2.3	<2	0.83	<0.5	7	18	35	2.62
L856213		3.89	0.007	<0.2	0.76	13	<10	180	1.5	<2	0.75	<0.5	7	19	27	2.39
L856214		<0.02	0.005	<0.2	0.78	12	<10	190	1.6	<2	0.78	<0.5	7	19	28	2.47
L856215		1.71	0.021	<0.2	1.12	22	<10	220	3.8	<2	1.19	<0.5	8	16	10	3.39
L856216		1.27	0.008	<0.2	0.93	28	<10	140	3.7	<2	0.80	<0.5	8	11	28	3.05
L856217		2.74	0.025	0.2	0.92	65	<10	100	3.8	<2	0.45	<0.5	4	7	35	2.06
L856218		1.18	0.137	0.5	0.97	375	<10	90	5.3	5	0.40	<0.5	3	4	147	2.10
L856219		2.46	0.035	0.3	0.61	113	<10	100	3.2	<2	0.72	<0.5	3	5	18	1.87
L856220		2.02	0.012	<0.2	0.84	40	<10	190	2.4	<2	1.36	<0.5	5	15	12	2.26
L856221		4.12	0.024	<0.2	0.68	34	<10	120	3.0	<2	0.78	<0.5	4	12	10	1.81
L856222		5.03	0.018	<0.2	1.14	22	<10	120	4.0	<2	1.35	<0.5	7	16	12	3.12
L856223		2.00	0.090	<0.2	0.43	870	<10	80	3.5	<2	1.39	<0.5	5	7	21	2.60
L856224		0.83	<0.005	<0.2	0.02	2	<10	20	<0.5	2	20.7	<0.5	<1	<1	1	0.51
L856225		3.62	0.031	<0.2	0.54	293	<10	90	3.6	<2	1.48	<0.5	4	5	13	2.14
L856226		4.14	0.032	<0.2	0.47	294	<10	80	2.4	<2	0.78	<0.5	3	6	15	1.58
L856227		2.08	0.011	<0.2	0.62	21	<10	80	3.1	<2	0.70	<0.5	3	7	7	1.71
L856228		3.28	0.007	<0.2	0.81	23	<10	120	4.0	<2	0.95	<0.5	3	14	3	1.56
L856229		3.09	0.012	<0.2	0.87	146	<10	140	4.1	<2	1.90	<0.5	5	25	20	2.08
L856230		2.61	0.012	<0.2	0.71	117	<10	70	5.3	<2	3.16	<0.5	4	9	7	2.69
L856231		3.28	0.056	<0.2	1.00	489	<10	120	5.3	<2	1.78	<0.5	5	22	6	2.69
L856232		4.54	0.008	<0.2	0.85	178	<10	70	5.9	<2	2.61	<0.5	4	13	2	2.49
L856233		2.34	0.639	<0.2	0.72	366	<10	70	4.8	2	2.18	<0.5	7	13	9	2.25
L856234		<0.02	0.639	<0.2	0.71	348	<10	70	4.7	2	2.12	<0.5	7	12	10	2.26
L856235		2.63	0.010	<0.2	0.70	18	<10	100	3.2	<2	1.10	<0.5	5	13	22	2.36





ALS Canada Ltd.  
2103 Dollarton Hwy  
North Vancouver BC V7H 0A7  
Phone: 604 984 0221 Fax: 604 984 0218 www.alsglobal.com

To: GOLDEN PREDATOR CANADA CORP.  
C/O PREDATOR MINING GROUP  
888 DUNSMUIR STREET, 11TH FLOOR  
VANCOUVER BC V6C 3K4

Page: 4 - B  
Total # Pages: 5 (A - C)  
Finalized Date: 29-NOV-2012  
Account: GOPRED

Project: Brewery Creek

**CERTIFICATE OF ANALYSIS WH12264109**

Sample Description	Method Analyte Units LOR	ME-ICP41 Ga ppm 10	ME-ICP41 Hg ppm 1	ME-ICP41 K % 0.01	ME-ICP41 La ppm 10	ME-ICP41 Mg % 0.01	ME-ICP41 Mn ppm 5	ME-ICP41 Mo ppm 1	ME-ICP41 Na % 0.01	ME-ICP41 Ni ppm 1	ME-ICP41 P ppm 10	ME-ICP41 Pb ppm 2	ME-ICP41 S % 0.01	ME-ICP41 Sb ppm 2	ME-ICP41 Sc ppm 1	ME-ICP41 Sr ppm 1
L856196		<10	<1	0.87	60	0.89	231	<1	0.08	14	1720	9	0.08	2	2	114
L856197		<10	<1	0.88	60	0.89	335	<1	0.08	14	1750	9	0.19	4	4	185
L856198		<10	<1	0.91	60	0.89	334	<1	0.08	14	1800	9	0.09	<2	3	146
L856199		<10	<1	0.94	50	0.83	253	1	0.11	27	1150	19	0.09	4	2	112
L856200		10	<1	0.93	50	0.82	295	1	0.10	33	1090	21	0.06	3	2	97
L856201		<10	<1	0.55	60	0.36	261	2	0.09	5	1300	23	0.13	3	3	99
L856202		<10	<1	0.42	50	0.24	247	2	0.08	5	1060	19	0.13	5	2	92
L856203		<10	<1	0.42	40	0.34	313	2	0.07	4	1220	20	0.27	14	3	106
L856204		<10	<1	0.01	<10	11.60	204	<1	0.01	<1	160	<2	0.02	<2	<1	49
L856205		<10	<1	0.47	50	0.33	210	3	0.09	3	1190	26	0.15	6	2	99
L856206		<10	<1	0.47	50	0.40	288	3	0.08	4	1520	28	0.16	4	3	100
L856207		10	<1	0.60	60	0.54	318	4	0.09	4	1890	24	0.33	5	4	116
L856208		10	<1	0.84	50	0.86	412	1	0.09	11	1670	17	0.03	3	3	127
L856209		10	<1	0.70	50	0.75	419	<1	0.13	8	1400	33	0.01	2	4	142
L856210		<10	<1	0.67	50	0.68	349	<1	0.11	8	1380	21	0.01	2	4	89
L856211		10	<1	0.67	60	0.72	371	<1	0.11	7	1620	21	0.01	5	4	94
L856212		10	<1	0.71	60	0.75	337	1	0.11	12	1600	23	0.01	2	4	88
L856213		10	<1	0.65	60	0.61	255	<1	0.07	7	1700	17	0.01	2	3	57
L856214		10	<1	0.68	60	0.63	265	<1	0.08	8	1740	17	0.01	<2	3	60
L856215		10	<1	0.72	90	0.86	450	<1	0.12	6	2320	21	0.01	<2	7	80
L856216		10	<1	0.39	80	0.57	391	<1	0.08	4	1740	18	0.01	4	8	66
L856217		<10	<1	0.28	40	0.41	227	<1	0.06	1	710	24	0.01	7	3	64
L856218		<10	<1	0.28	40	0.44	152	<1	0.06	<1	520	29	0.01	10	3	59
L856219		<10	<1	0.29	40	0.29	253	1	0.08	1	760	23	0.04	4	3	75
L856220		<10	<1	0.47	50	0.52	323	1	0.15	1	1020	27	0.02	2	4	123
L856221		<10	<1	0.29	50	0.34	325	<1	0.09	2	1050	25	0.01	3	3	71
L856222		10	<1	0.27	60	0.67	431	2	0.06	6	1290	23	0.06	3	5	67
L856223		<10	<1	0.24	50	0.39	473	4	0.08	2	880	19	0.27	6	3	76
L856224		<10	<1	0.01	<10	12.55	202	<1	0.01	<1	170	2	0.01	<2	<1	49
L856225		<10	<1	0.26	50	0.42	335	2	0.08	2	690	20	0.27	9	3	78
L856226		<10	<1	0.28	50	0.19	232	2	0.10	2	680	19	0.12	3	2	63
L856227		<10	<1	0.28	50	0.29	306	<1	0.13	1	660	23	0.01	2	2	49
L856228		<10	<1	0.31	90	0.36	271	1	0.17	3	660	32	0.01	2	3	66
L856229		<10	<1	0.41	90	0.57	343	3	0.12	6	1210	29	0.02	<2	4	86
L856230		<10	<1	0.17	60	0.91	636	5	0.06	3	600	19	0.21	4	3	72
L856231		10	<1	0.27	80	0.60	496	6	0.08	5	890	23	0.08	3	5	78
L856232		<10	<1	0.14	80	0.66	602	7	0.06	4	690	21	0.06	<2	4	78
L856233		<10	<1	0.22	70	0.46	484	4	0.06	7	1010	23	0.06	<2	5	78
L856234		<10	<1	0.21	70	0.46	468	5	0.06	7	1020	24	0.06	<2	5	77
L856235		<10	<1	0.41	60	0.43	330	<1	0.11	6	1170	22	0.01	<2	3	67



ALS Canada Ltd.  
 2103 Dollarton Hwy  
 North Vancouver BC V7H 0A7  
 Phone: 604 984 0221 Fax: 604 984 0218 www.alsglobal.com

To: GOLDEN PREDATOR CANADA CORP.  
 C/O PREDATOR MINING GROUP  
 888 DUNSMUIR STREET, 11TH FLOOR  
 VANCOUVER BC V6C 3K4

Page: 4 - C  
 Total # Pages: 5 (A - C)  
 Finalized Date: 29-NOV-2012  
 Account: GOPRED

Project: Brewery Creek

**CERTIFICATE OF ANALYSIS WH12264109**

Sample Description	Method Analyte Units LOR	ME-ICP41	ME-ICP41	ME-ICP41	ME-ICP41	ME-ICP41	ME-ICP41	ME-ICP41
		Th	Ti	Ti	U	V	W	Zn
		ppm	%	ppm	ppm	ppm	ppm	ppm
		20	0.01	10	10	1	10	2
L856196		20	0.22	<10	10	46	<10	52
L856197		20	0.21	<10	<10	58	<10	59
L856198		20	0.22	<10	<10	58	<10	61
L856199		20	0.23	<10	10	55	<10	61
L856200		20	0.25	<10	<10	60	<10	68
L856201		20	0.14	<10	10	88	<10	68
L856202		30	0.10	<10	10	64	<10	65
L856203		<20	0.10	<10	<10	67	<10	68
L856204		<20	<0.01	<10	10	1	<10	14
L856205		20	0.11	<10	<10	72	<10	72
L856206		20	0.13	<10	<10	89	<10	78
L856207		20	0.17	<10	<10	109	<10	98
L856208		20	0.24	<10	<10	71	<10	72
L856209		20	0.22	<10	<10	70	<10	72
L856210		20	0.20	<10	<10	62	<10	64
L856211		30	0.20	<10	10	74	<10	72
L856212		20	0.21	<10	<10	71	<10	75
L856213		20	0.20	<10	<10	75	<10	69
L856214		20	0.21	<10	<10	78	<10	72
L856215		40	0.24	<10	10	103	<10	101
L856216		40	0.15	<10	10	85	<10	83
L856217		30	0.07	<10	10	52	<10	43
L856218		30	0.06	<10	10	58	<10	33
L856219		30	0.06	<10	10	43	<10	37
L856220		20	0.15	<10	10	71	<10	58
L856221		30	0.07	<10	10	38	<10	44
L856222		30	0.09	<10	10	73	<10	91
L856223		30	0.05	<10	10	48	<10	78
L856224		<20	<0.01	<10	<10	1	<10	16
L856225		30	0.06	<10	10	41	<10	58
L856226		30	0.07	<10	10	28	<10	39
L856227		50	0.10	<10	10	26	<10	42
L856228		110	0.12	<10	20	31	<10	45
L856229		90	0.14	<10	20	44	<10	59
L856230		60	0.04	<10	10	23	<10	62
L856231		80	0.08	<10	30	42	<10	73
L856232		90	0.04	<10	20	30	<10	67
L856233		50	0.06	<10	10	40	<10	81
L856234		50	0.06	<10	10	39	<10	79
L856235		30	0.13	<10	10	47	<10	69



ALS Canada Ltd.  
 2103 Dollarton Hwy  
 North Vancouver BC V7H 0A7  
 Phone: 604 984 0221 Fax: 604 984 0218 www.alsglobal.com

To: GOLDEN PREDATOR CANADA CORP.  
 C/O PREDATOR MINING GROUP  
 888 DUNSMUIR STREET, 11TH FLOOR  
 VANCOUVER BC V6C 3K4

Page: 5 - A  
 Total # Pages: 5 (A - C)  
 Finalized Date: 29-NOV-2012  
 Account: GOPRED

Project: Brewery Creek

**CERTIFICATE OF ANALYSIS WH12264109**

Sample Description	Method Analyte Units LOR	WEI-21 Recvd Wt. kg	Au-AA23 Au ppm	ME-ICP41 Ag ppm	ME-ICP41 Al %	ME-ICP41 As ppm	ME-ICP41 B ppm	ME-ICP41 Ba ppm	ME-ICP41 Be ppm	ME-ICP41 Bi ppm	ME-ICP41 Ca %	ME-ICP41 Cd ppm	ME-ICP41 Co ppm	ME-ICP41 Cr ppm	ME-ICP41 Cu ppm	ME-ICP41 Fe %
		0.02	0.005	0.2	0.01	2	10	10	0.5	2	0.01	0.5	1	1	1	0.01
L856236		3.33	0.026	<0.2	0.79	18	<10	120	3.0	2	1.64	<0.5	5	12	21	2.37
L856237		2.53	0.010	<0.2	0.99	22	<10	120	3.2	<2	1.65	<0.5	7	15	21	2.98
L856238		1.86	0.057	<0.2	1.32	119	<10	100	6.4	<2	1.33	<0.5	8	18	23	4.44
L856239		1.91	0.011	<0.2	1.17	16	<10	150	4.4	<2	1.09	<0.5	7	17	13	3.22
L856240		3.32	0.019	<0.2	1.14	27	<10	120	4.4	<2	0.88	<0.5	5	16	8	2.15
L856241		1.47	0.027	<0.2	1.22	64	<10	110	5.5	<2	0.67	<0.5	4	15	8	2.62
L856242		2.41	0.341	<0.2	0.82	79	<10	90	4.2	3	1.13	<0.5	5	15	13	1.39
L856243		4.34	2.06	<0.2	0.95	292	<10	90	5.6	12	0.68	<0.5	6	17	7	2.14
L856244		0.82	0.012	<0.2	0.02	3	<10	20	<0.5	2	20.4	<0.5	<1	<1	1	0.51
L856245		3.71	0.247	<0.2	0.81	79	<10	80	5.0	2	0.95	<0.5	4	14	9	1.58
L856246		2.55	0.089	<0.2	0.76	91	<10	110	3.9	2	0.98	<0.5	6	14	19	1.95
L856247		2.36	0.025	<0.2	1.36	65	<10	150	7.3	<2	0.88	<0.5	10	23	24	4.41
L856248		2.78	0.043	<0.2	0.99	353	<10	130	4.1	<2	1.64	<0.5	9	18	35	3.08
L856249		3.14	0.119	<0.2	1.29	23	<10	120	4.8	<2	2.06	<0.5	7	21	22	3.60
L856250		2.65	0.006	<0.2	0.90	14	<10	150	4.2	<2	1.76	<0.5	8	19	16	3.15
L856251		3.96	0.007	<0.2	0.95	24	<10	160	4.5	<2	1.96	<0.5	9	21	24	3.55
L856252		3.98	0.012	<0.2	1.01	24	<10	190	2.3	2	0.94	<0.5	8	20	19	2.81
L856253		4.26	0.006	<0.2	1.05	25	<10	190	2.6	2	0.94	<0.5	8	20	26	2.92
L856254		4.22	0.010	<0.2	0.99	48	<10	190	2.4	<2	0.98	<0.5	8	19	25	2.73
L856255		2.86	0.006	<0.2	0.94	26	<10	170	2.7	<2	0.99	<0.5	7	21	18	2.75



2103 Dollarton Hwy  
North Vancouver BC V7H 0A7  
Phone: 604 984 0221 Fax: 604 984 0218 [www.alsglobal.com](http://www.alsglobal.com)

To: GOLDEN PREDATOR CANADA CORP.  
C/O PREDATOR MINING GROUP  
888 DUNSMUIR STREET, 11TH FLOOR  
VANCOUVER BC V6C 3K4

Page: 5 - B  
Total # Pages: 5 (A - C)  
Finalized Date: 29-NOV-2012  
Account: GOPRED

Project: Brewery Creek

**CERTIFICATE OF ANALYSIS    WH12264109**

[illegible]



2103 Dollarton Hwy  
North Vancouver BC V7H 0A7

Fax: 604 984 0218    [www.alsglobal.com](http://www.alsglobal.com)

**C/O PREDATOR MINING GROUP  
888 DUNSMUIR STREET, 11TH FLOOR  
VANCOUVER BC V6C 3K4**

Total # Pages: 5 (A - C)  
Finalized Date: 29-NOV-2012  
Account: GOPRED

Project: Brewery Creek

# CERTIFICATE OF ANALYSIS WH12264109

Sample Description	Method Analyte Units LOR	ME-ICP41	ME-ICP41	ME-ICP41	ME-ICP41	ME-ICP41	ME-ICP41	ME-ICP41
		Th	Ti	Ti	U	V	W	Zn
		ppm	%	ppm	ppm	ppm	ppm	ppm
		20	0.01	10	10	1	10	2
L856236		30	0.17	<10	10	45	<10	71
L856237		30	0.21	<10	<10	48	<10	83
L856238		40	0.16	<10	10	100	<10	104
L856239		40	0.18	<10	<10	54	<10	88
L856240		80	0.12	<10	10	46	<10	57
L856241		100	0.08	<10	20	62	<10	45
L856242		110	0.09	<10	20	39	<10	38
L856243		110	0.09	<10	20	50	<10	38
L856244		<20	<0.01	<10	<10	1	<10	13
L856245		100	0.08	<10	20	40	<10	37
L856246		80	0.16	<10	10	42	<10	47
L856247		40	0.20	<10	10	78	<10	110
L856248		40	0.22	<10	10	63	<10	86
L856249		40	0.23	<10	10	63	<10	102
L856250		40	0.25	<10	10	62	<10	107
L856251		50	0.26	<10	10	66	<10	110
L856252		50	0.29	<10	10	53	<10	94
L856253		50	0.29	<10	20	62	<10	94
L856254		50	0.28	<10	10	51	<10	86
L856255		50	0.27	<10	20	52	<10	83